



**"Beat more burglars with the only security mesh that uses Screw-Clamp™ technology."**

# Single Sliding Safe-S-Capes®

Doors

Windows

Patio Enclosures

Cyclone

Debris Screens

Safe-S-Capes®

- Hinged
- Double & Triple Sliding
- Inswinging

Commercial Systems

Balustrade & Pool Fencing

Fire Attenuation

WERS Rated



## Easy, secure access to outdoor entertaining areas

Crimsafe's unique Safe-S-Cape is a keyless exit system. It lets you quickly exit in a fire or other emergency, but is just as hard to penetrate as all our other products because it features Crimsafe's Screw-Clamp technology and Tensile-Tuff® security mesh as well as a triple "anti-jemmy" design that protects the lock.

The Single Sliding Safe-S-Cape is a sliding panel of Crimsafe. Along one edge of the panel is a full length locking stile that, when lightly pressed, releases along its entire length. With its one touch and slide release, even a small child can operate a Sliding Safe-S-Cape.

Because it slides within a single track, the Single Sliding Safe-S-Cape can fit into tighter spots than Double or Triple-Sliding Safe-S-Capes. It also makes the perfect sliding servery screen for kitchen windows.

There are two designs for servery spaces. In the first design, the moving panels slide from the side with the locking position on the jambs.

In the second unique design, the locking position is in the middle of the opening, creating a large servery space when the locking panels are slid apart to the left and to the right.

*More about Single Sliding Safe-S-Capes overleaf...*

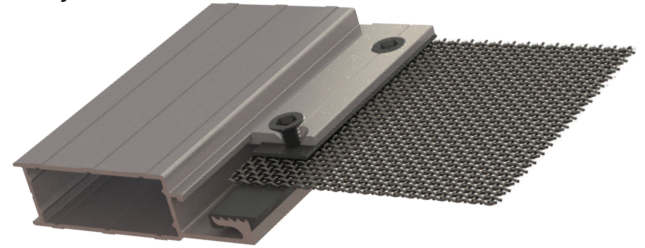




## Applications

These window types can utilise  
**Single Sliding/Servery Safe-S-Capes**

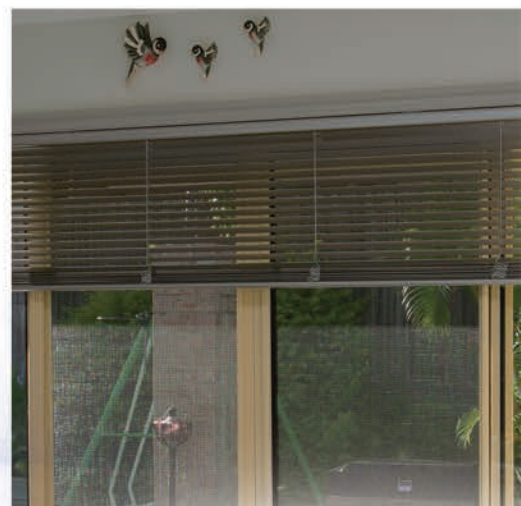
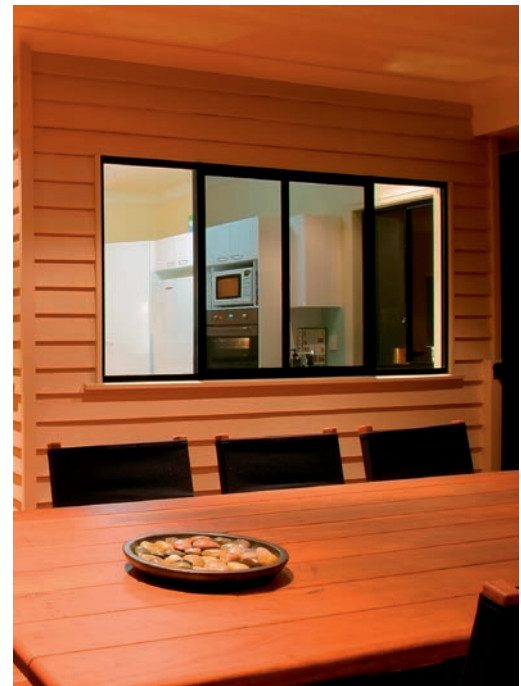
- Fixed and Sliding Window Panel Combinations
- Servery Window



## Features & Benefits of Single Sliding/Servery Safe-S-Capes

Keyless Exit and One-Touch Release	Peace of mind, knowing that in an emergency you can get out of the house fast thanks to the one-touch and slide release
Full Length Locking Stile	Increased strength due to continuous contact with the frame
Integrated Interlocking Panels	Locking panels enhance the strength of the system
Slimline Design	Heavy duty protection without heavy duty looks
Heavy Duty Rollers	We use high quality rollers designed for glass windows, so they will last even longer with relatively light Crimsafe panels
Easy Access to Window Surface	Crimsafe panel slides away from the window surface, enabling easy cleaning
Smaller Frame Sections	Boasting the strength of door frames, but with a smaller frame width
Screw-Clamped Security	Only Crimsafe clamps 304 Tensile-Tuff® security mesh between 2 serrated pieces of metal, then drives a screw right through both mesh and frame to ensure a "vice-like" grip... and beat more burglars.
Tamper-Resistant Screws	Exclusive to Crimsafe. Screws can only be applied or removed by a tool registered with Crimsafe. This ensures the integrity of your security system.
Custom Built	Means a perfectly fitted job. Product can be made to fit the design and format of your window.
Enhanced Lifestyle	Crimsafe provides unhindered views, keeps out mosquitoes, and lets you keep a cool, safe house in summer
WERS Rated	Improves the energy rating of glass windows and doors and gives your home the ability to gain a higher home energy star rating.
Solar Heat Gain Reduction	Solar heat gain is reduced by up to 53% reducing dependence on air-conditioning and saving on energy bills.
Passes Australian and Industry Standards	Crimsafe always exceeds the relevant Australian and Industry Standards for security
Range of Colours	Crimsafe stocks a range of standard colours so that the system you buy complements your home. Other colours are available on request.
Guaranteed for 10 years	Crimsafe warrants the product from defects in materials under the conditions of normal use for up to 10 years from the date of purchase. Please refer to our Warranty & Care Guide for more information.

*Only Crimsafe drives a screw right through mesh and frame – for unbeatable strength*



Contact your local Licensee today:

Visit [www.crimsafe.com.au](http://www.crimsafe.com.au)



CRIME PREVENTION PARTNERS