



Connecting Key Word Sign across Australia: What do clients, clinicians and communities need now?

Karen Bloomberg Key Word Sign Australia - Victoria



kbloomberg@scopevic.org.au

What is Key Word Sign?

- an AAC system based on a simplified form of manual sign
- designed for use by and with people who have communication difficulties
- uses the manual signs of the host country

(KWS is NOT a sign language)

Key Word Sign & Auslan: What's the difference?



Key Word Sign

- person can hear but can't talk, or speech is difficult to understand
- speech & sign are used together
- only key words of a spoken sentence are signed
- borrows signs from Auslan with natural gesture
- borrows sign production techniques from Auslan

Auslan

- language of the Australian Deaf Community
- uses sign only
- has unique grammar - not comparable to spoken English
- non-spoken word order
- uses Auslan signs & some natural gesture
- sign production techniques are part of Auslan

History of Key Word Sign

- Used internationally
- Introduced here (as Makaton) in early 1980s
 - Makaton is a brand name (Margaret Walker, Kathy Johnston, Tony Cornforth).
 - Makaton is still used in the UK and other countries.
- *Other commercial systems*
 - *Signalong (matched to the Darbyshire Language Scheme) BSL*
 - *Lamh – Communication Augmentation Sign System Ltd. Irish Sign*
 - *Belgium "Streeflijstwoordenschat voor zesjarigen"*

Also known as....

- Signing essential English (SEE 1)
- Sign supported speech
- Total communication
- Pidgin sign

Not

- *Signed English*
- *Manually coded English*

Why the change from Makaton

- Change to Key Word Sign Australia – 2010
- Traditional “Makaton” workshops not done for many years
 - Use of an Interactive Vocabulary (Brownlie, 1999)
- Pressure to teach Makaton symbol workshops
- Chance to develop a new evidence based vocabulary set:
 - *core vocabulary consistent across populations, activities, topics and demographic groups*
 - *Australian based vocabulary*

Organisational Structure

- Host organisation –resources & research
 - was University of Newcastle
- National Training coordinator
 - State trainers (NSW, WA, SA & VIC)
- * National research officer
- State Coordinators
 - Administration: information, sign updates
 - Allocation of workshops
 - Sale of resources
- Key Word Sign Presenters

Overview

- “Train-the-trainer” approach
- National training coordinator mentors and supports state-based trainers
- State-based trainers (expertise in aided & unaided AAC)
 - deliver competency-based training package i.e. Presenter Training
- State-based committees
 - Support local network of Key Word Sign Presenters
 - membership; social media; sign updates

Key Word Sign Presenters

- Predominantly speech pathologists
 - Some parents, special educators, aides and support workers
- Attend 3.5 day intensive training
 - multi-modal communication (aided & unaided)
 - adult learning styles
 - current research and resources
 - 400 training vocabulary of Auslan signs
 - (supervised/mentored to deliver first workshop)
- Deliver workshops
 - Teach small groups/individuals use of key word sign and gesture

Key Word Sign Presenters

- Maintain their theory/signing skills (sign updates & membership of state organisations)
- Deliver workshops or KWS support within their workplace
- Deliver workshops for state KWS organisation
- Presenter Training – Victoria October 2nd – 5th
 - Pre-requisite – attendance at a basic workshop

Who uses Key Word Sign (KWS)?

- Everyone can use KWS!
- Used by people who experience difficulty with spoken language AND the people who interact with them
- not a question of Aided vs Unaided or choosing one over the other
 - BOTH can be used to enhance a person's expressive communication and understanding

4 categories of Key Word Sign user

- 1) For early interaction (beginning communicators). Awareness of the power of language. (Dowden - Emergent communicators)
- 2) For developing language. Concept and vocabulary development. (Dowden – Context dependent communicators)
- 3) For functional use – ongoing/lifelong communication difficulties (Preference of independent communicators)
- 4) For communication partners

Australian Key Word Sign Vocabulary

Aims to:

- have a functional/useful set of words
- support comprehension and expression
- promote sign fluency in communication partners
- create a signing environment
- Vocabulary selected to support
 - *early interaction, developing language & functional skills*

KWS Australian Vocabulary 2011

Approximately 700 words

- **Core** = Interactive Vocabulary (100 items)
 - Natural gesture (40%) ; Set 1; Set 2
- (Finger spelling eg. *toilet*)
- Taught in basic workshop

- Fringe/other vocabulary = 600
 - 22 Semantic & Syntactic Categories

Basic Workshop

- a "starter" set of signs that are interactive & functional across a range of contexts
- ability to integrate natural gestures with sign
- the ability to think about how to expand vocab for specific situations (scripting etc)
- aided and unaided options
 - rationale for multi-modal communication
 - resources
 - “Getting started with Key Word Sign”

Working Party for New Vocabulary

State Trainers:

- Western Australia – Kerry Revell (& Sabrina Debeer)
- South Australia – Lyn Rule & Cathy Olsson
- Victoria – Karen Bloomberg & Teena Caithness
- NSW – Leigha Dark & Libby Brownlie
 - Input from Tassie (Megan Cavanagh), QLD (Sue Owen) & NT (Michelle Foley)

Source of signs

- auslan.org.au

Sign 1673 of 4297 in the Auslan Dictionary

« PREVIOUS SIGN NEXT SIGN »

Matches for the word *catch*

1 2 3 4 5 6

Keywords: capture, catching up, catch up, **catch**, notice, prey

Sign Definition

As a Noun

1. The catching of someone or something and making them a prisoner, especially after a struggle or in a war. English = capture.
2. Work which you need to do on some activity which is late in order to make it complete or at least up to date. English = catching up.

As a Verb or Adjective

1. To catch someone or something and make them a prisoner, especially after a struggle or in a war. English = capture.
2. To reach someone who is in front of you by walking or running faster than they are walking or running. English = catch up with, catch up to.
3. To see something clearly or think about something and realise its importance and significance. English = catch, notice.
4. [Especially when the sign is repeated] of a wild animal, to capture, kill and eat other animals. English = prey on.

[Provide feedback about this sign](#)
[Report a missing sign](#)
[Provide general site feedback](#)

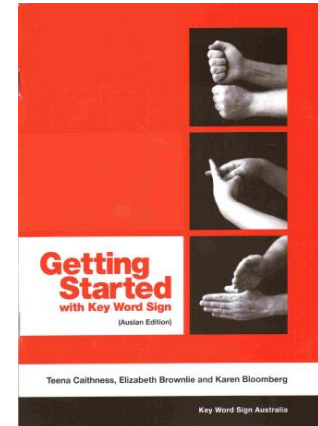


Sign Resources

Check website for resources

www.newcastle.edu.au/KWSA

- Getting started with Key Word Sign
- Key Signs CD-ROM
- Other Resources



Available from Newcastle University
(refer to website above for resource details)

Auslan Dictionary available from WA Deaf Society

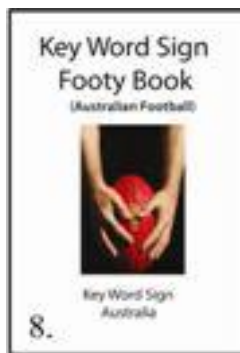
Other Sign Resources

- Sing and Sign With Me 2005
available from Aileen Ryan
02 9824 8332 “Hands Can Talk”



- Let's play with sign – Key Word Sign Australia

- KWS Footy Book



- Nursery Rhyme DVD

available from The Variety Club of Tasmania

PO Box 893 Sandy Bay Tasmania 7005

Phone: (03) 6223 1886 Fax: (03) 6224 0333



Key Word Sign NSW

Coordinators: Harmony Turnbull & Janine Hall
(Teacher/Consultant Disabilities, TAFE NSW & Auslan interpreter)

- membership@kwsnsw.com
- workshops@kwsnsw.com
- website@kwsnsw.com
- committee@kwsnsw.com

Website – www.kwsnsw.com

Key Word Sign NSW

- 17 committee members
- 60 active members (+ those completing 2013 supervised workshops)
- Use of website, Facebook & Twitter to connect with members, presenters and the community.
- Newsletter sent to members 4 x yearly.
- Member benefits – free workshop ads, members-only pages on web site with access to resources & workshop ideas and free sign updates

KWS NSW

- KWS Basic Workshop - accredited with BOSTES (previously known as the Teachers Institute) endorsed workshop for teacher PD
- Twitter - @KeyWordSignNSW

Key Word Sign Victoria

Coordinator – Heather Cullen

Contact

T: 0419 576 764

E: admin@keywordsignvictoria.org

presentertraining@keywordsignvictoria.org

Website: www.keywordsignvictoria.org

Key Word Sign Victoria

- 11 committee members
- 90 active members
- Use of Facebook to connect with members, presenters and the community.
- Newsletter sent to members 3 x yearly
- Sign Update 3 x yearly
- Key Word Sign kits (sent statewide)

Key Word Sign Tasmania

Coordinator – Megan Cavanagh

E: megan.cavanagh@education.tas.gov.au

+ Facebook page

Key Word Sign WA

Coordinator - Angela Wills

T: 08 9473 5479

Mob: 0450 589 178

E: angela.wills@senses.org.au

+ Facebook page

Key Word Sign SA

Coordinator - Amanda Best

Mob: 0432 347 447

E: keywordsignsa@gmail.com

Key Word Sign QLD

Coordinator: Jo Adsett

T: 07 3386 4133

Mob: 0467 812 934

E: jo.adsett@dete.qld.gov.au

(Currently working on launching Facebook)

Future directions

- Resource development - Software
 - allow print out of any combination
 - 600 words+
 - all 22 categories (total vocabulary)
 - “Signmaker App”
- Basic KWS workshop = 4 x 2 hour modules
- “Next level” workshops (advanced/refresher)
 - theory & vocabulary for more advanced users, practice sessions, fluency and scripting...

Research

Teaching Key Word Sign “Train-the-trainer” with early childhood workers

- (Kathy Cologon at Macquarie University & Teresa Iacono)

Vocabulary studies of people with developmental disability/ID

Vocabulary studies of “motherese”?

Is this developmental? – progression for EI, school age & adult population

Useful Websites

- www.newcastle.edu.au/kwsa
- www.auslan.org.au
- www.scopevic.org.au
(free down load - Nursery Rhymes to Sing, See & Sign)

